

# The Lakes Buildings

Two, 4-Story Office Buildings on Rivulon Boulevard

# RIVULON<sup>SM</sup>



Class A office space in one of the nation's fastest growing communities and premier mixed-use developments.

## BUILDING HIGHLIGHTS:

- Two, 4-story, +/- 168,000 SF office buildings for single or multi-tenant occupancy in a range of configurations and sizes
- Maximum comfort and space planning flexibility
- Premier location on Rivulon Boulevard
- Walking distance to retail, restaurants and fitness
- Key card access for maximum tenant security
- Ample surface and covered parking
- Adjacent to Gilbert Road and AZ 202

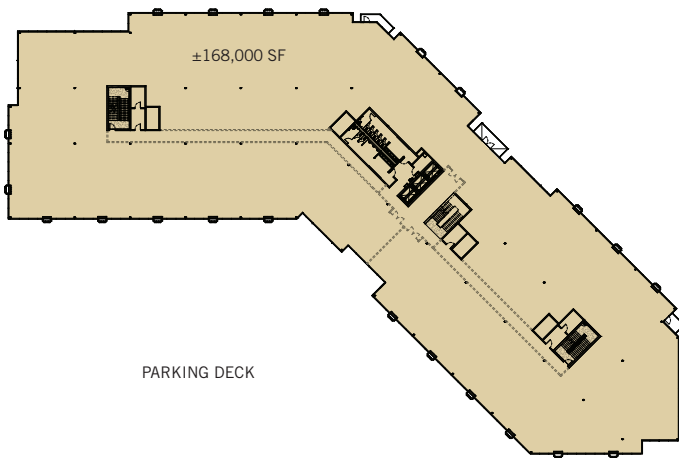
Rivulon is the region's premier business district located at the corner of Gilbert Rd. and the AZ 202 in Gilbert, AZ, just eight miles southeast of Phoenix. When fully complete, the 250-acre mixed-use development will include approximately 3 million square feet of Class A office, and 100,000 square feet of retail, dining and hotels. As evident by the first completed phases, Rivulon is being designed and developed with a holistic view of the site, ensuring a cohesive flow, compatibility of uses and sensitivity to the sustainability of resources.



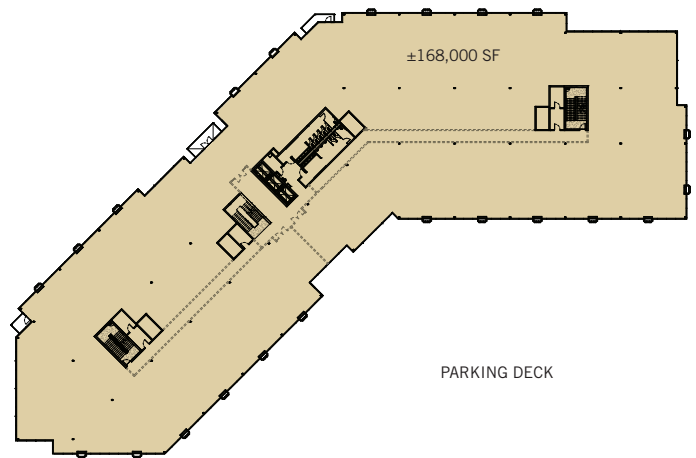




RIVULON BLVD.



PARKING DECK



PARKING DECK

\* Sample Floor Plates



**Nationwide®**

Chris Thompson:  
Nationwide Realty Investors  
614.857.2330  
thompsoncj@nationwide.com



Office Leasing  
Fred Darche:  
602.954.3756  
fdarche@leearizona.com  
John Cerchiai:  
602.954.3763  
jcerchiai@leearizona.com  
Spencer Nast:  
602.912.3525  
snast@leearizona.com

